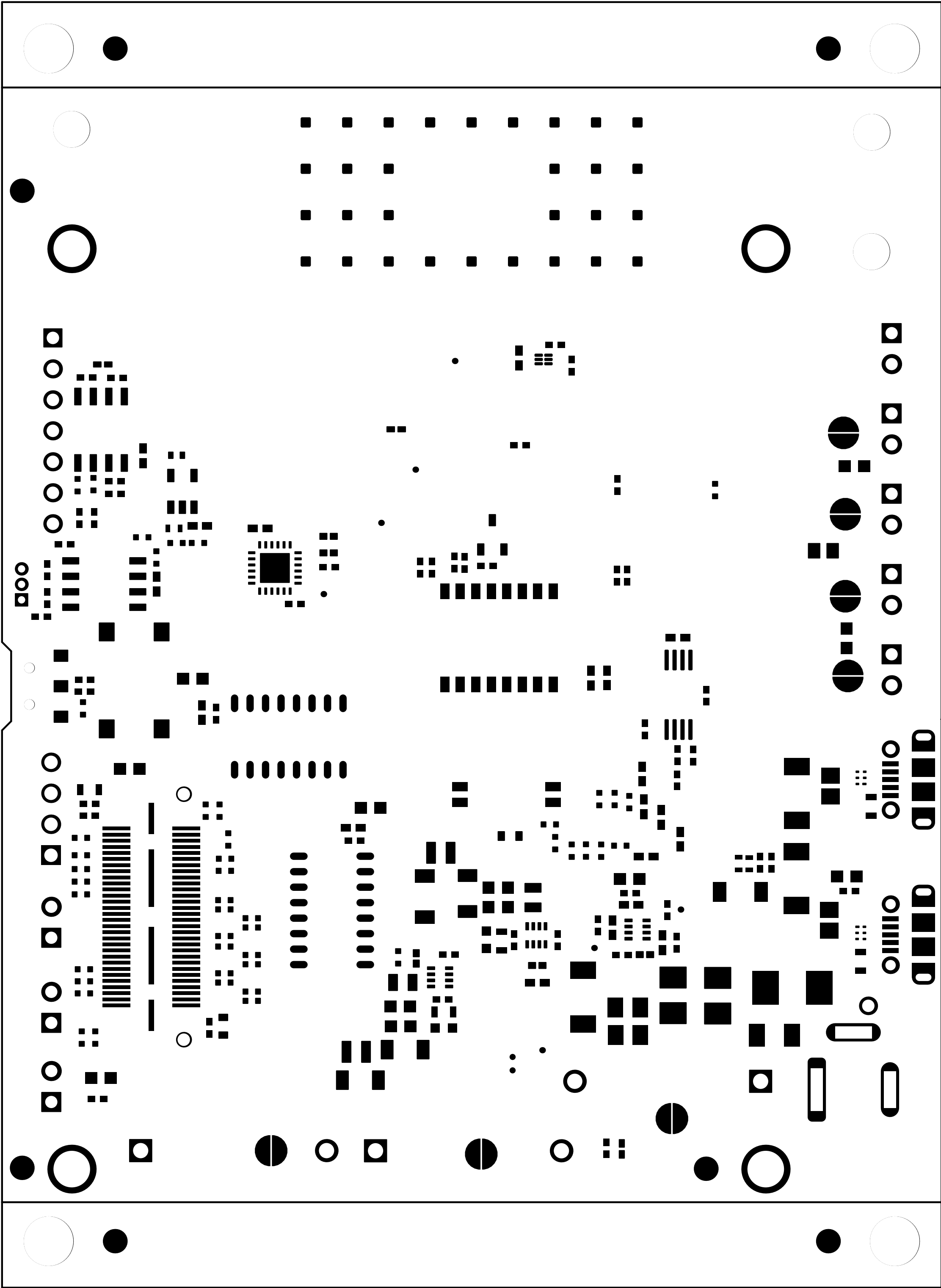
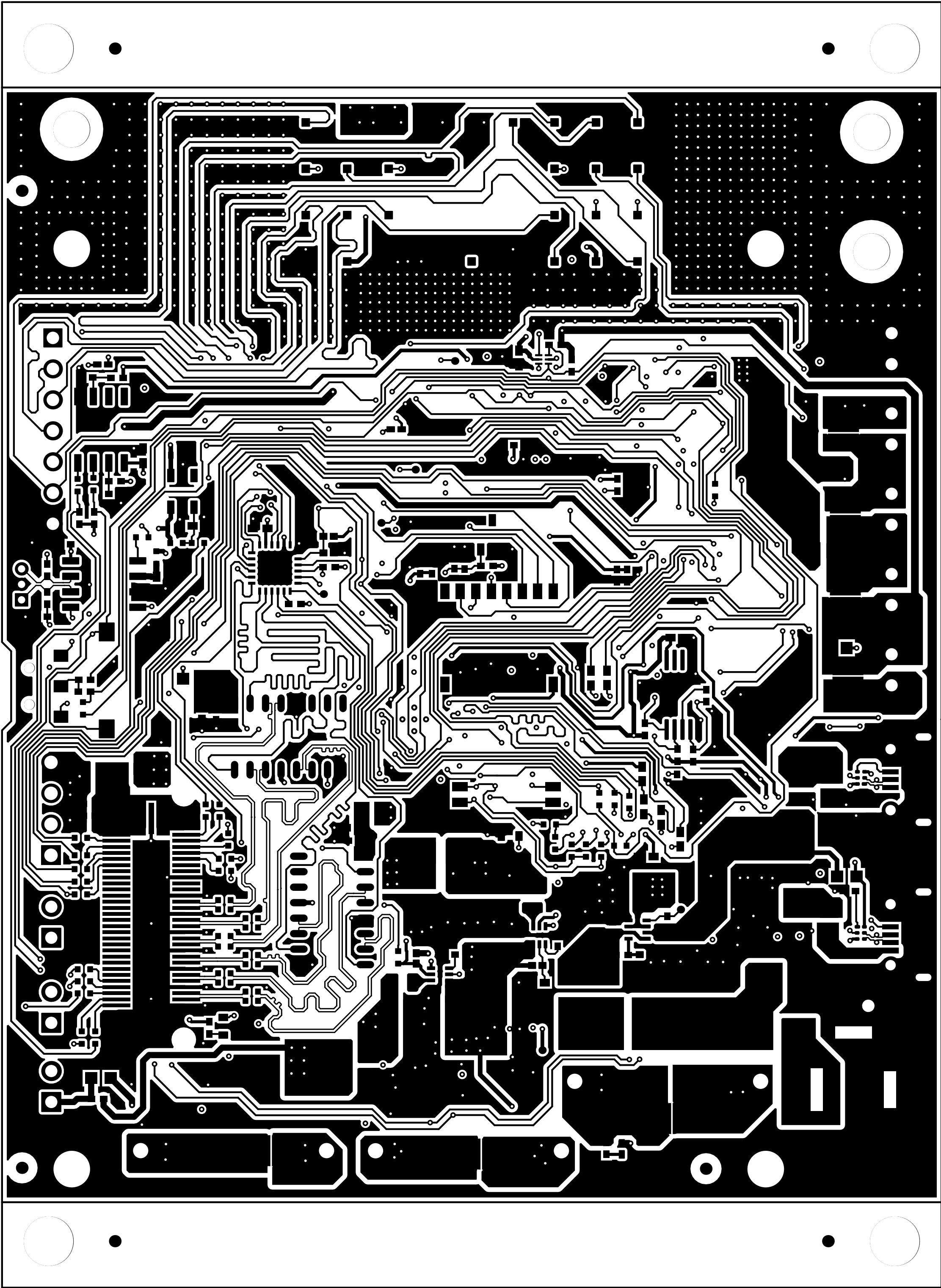


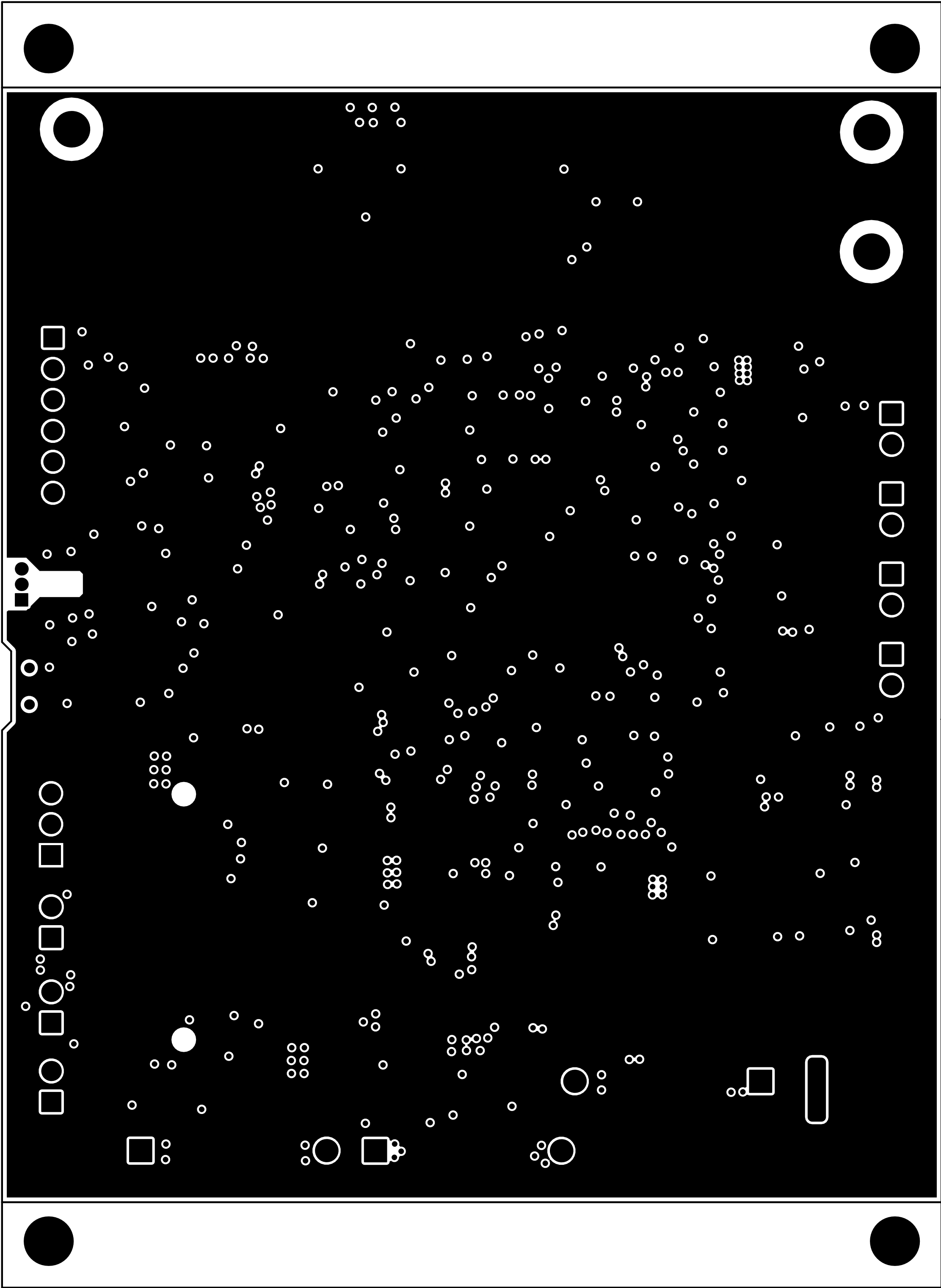
ALL ARTWORK VIEWED FROM TOP SIDE	BOARD #: PROC212	REV: A	SUN REV: Not in version control
LAYER NAME = Top Overlay	TID #: N/A		
PLOT NAME = Top Overlay	GENERATED : 15-10-2025 11:19:18		TEXAS INSTRUMENTS



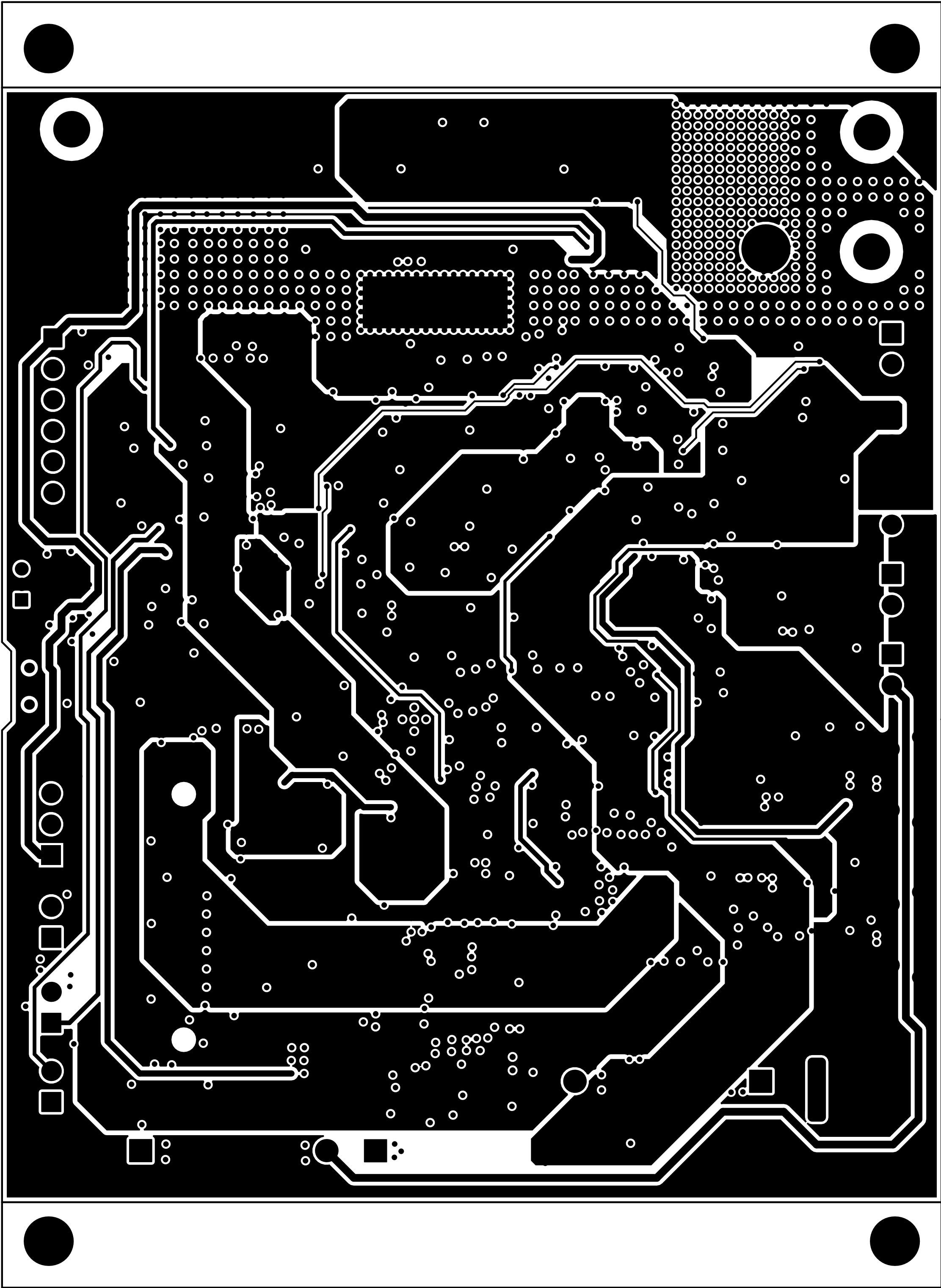
ALL ARTWORK VIEWED FROM TOP SIDE	BOARD #: PROC212	REV: A	SUN REV: Not in version control
LAYER NAME = Top Solder	TID #: N/A		
PLOT NAME = Top Solder Mask	GENERATED : 15-10-2025 11:19:18		TEXAS INSTRUMENTS



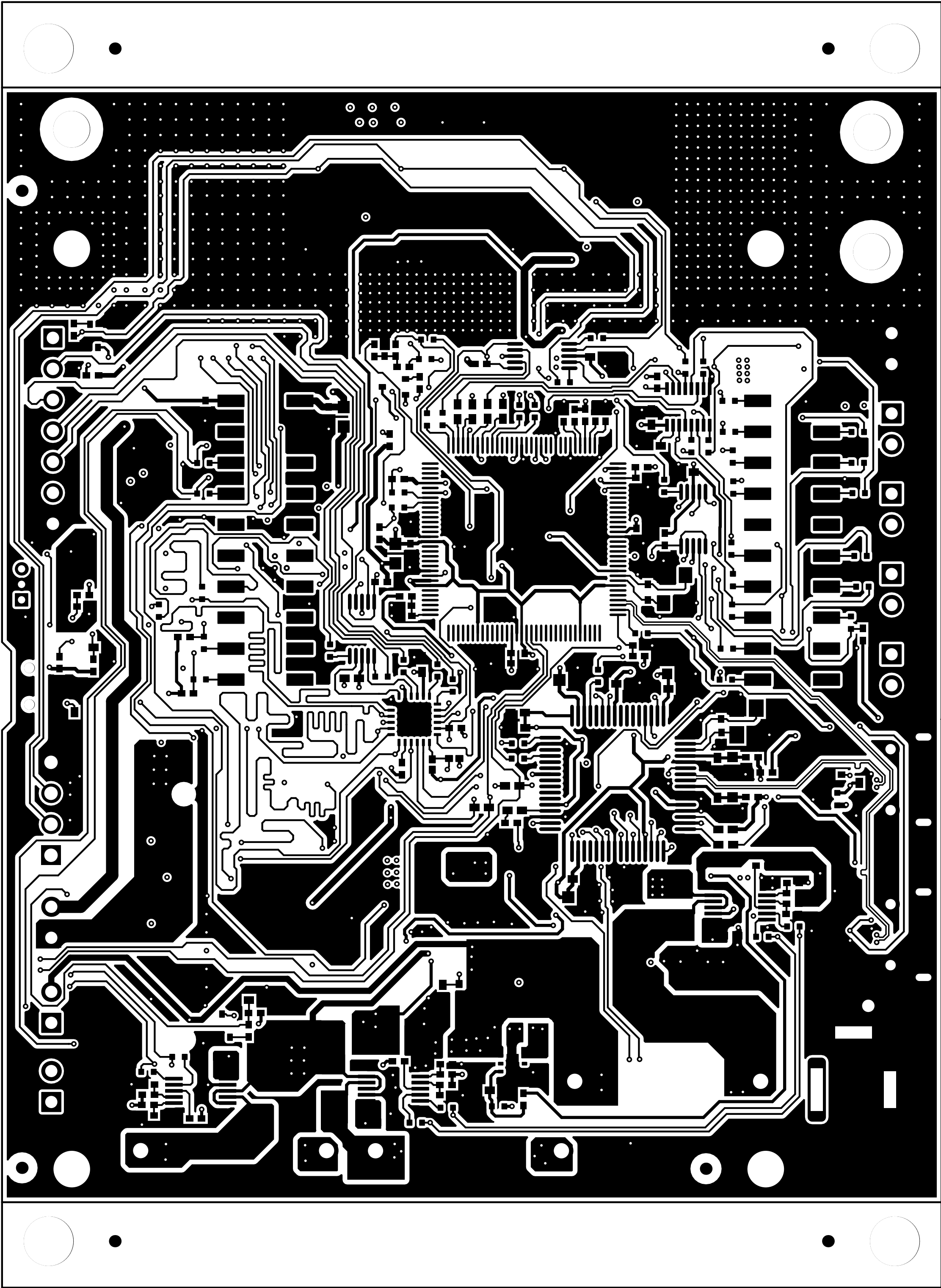
ALL ARTWORK VIEWED FROM TOP SIDE	BOARD #: PROC212	REV: A	SUN REV: Not in version control
LAYER NAME = Top Layer	TID #: N/A		
PLOT NAME = Top Layer	GENERATED : 15-10-2025 11:19:18		TEXAS INSTRUMENTS



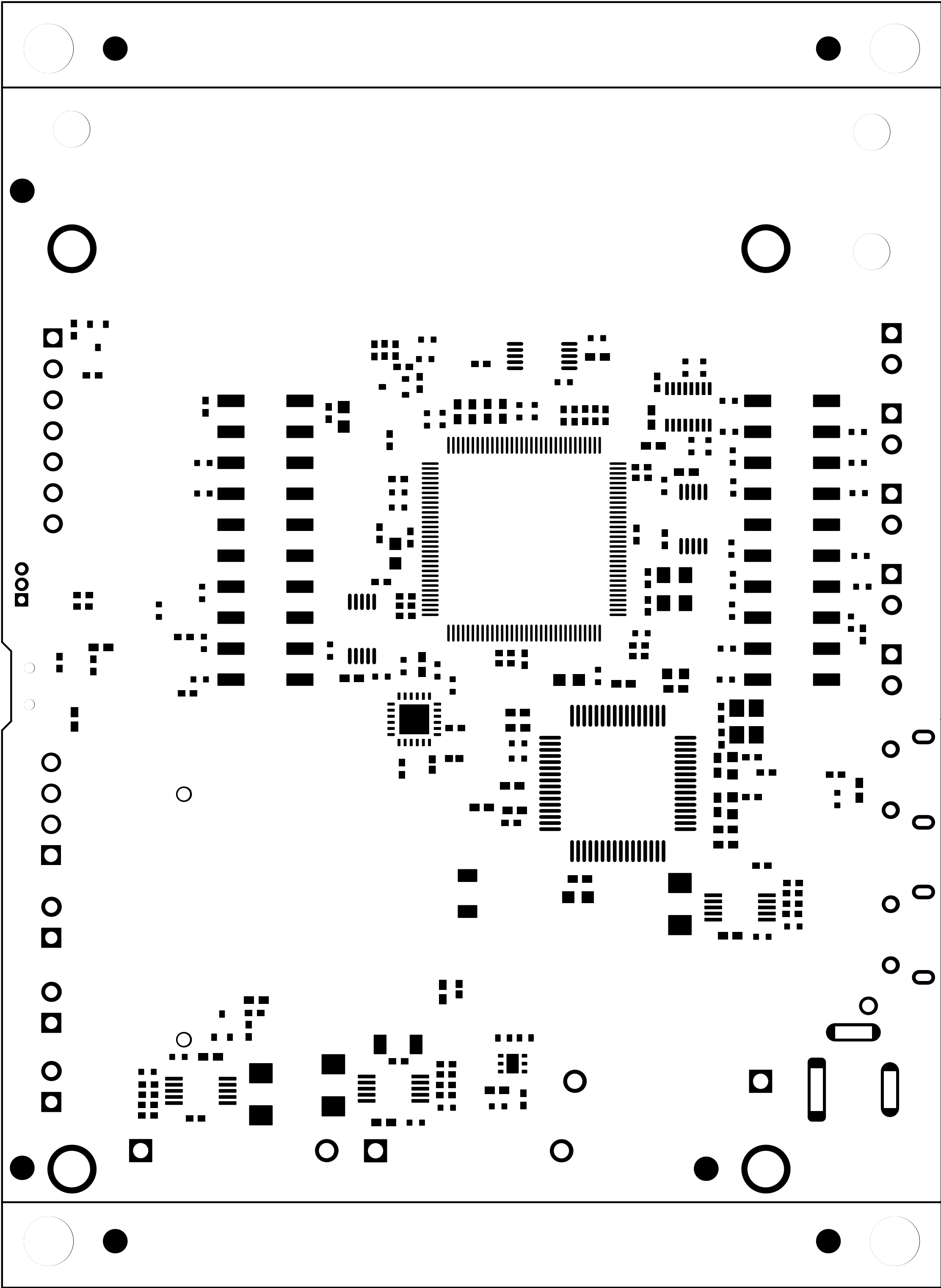
ALL ARTWORK VIEWED FROM TOP SIDE	BOARD #: PROC212	REV: A	SUN REV: Not in version control
LAYER NAME =L2_GND1	TID #: N/A		
PLOT NAME = Ground layer-1	GENERATED : 15-10-2025 11:19:18		TEXAS INSTRUMENTS



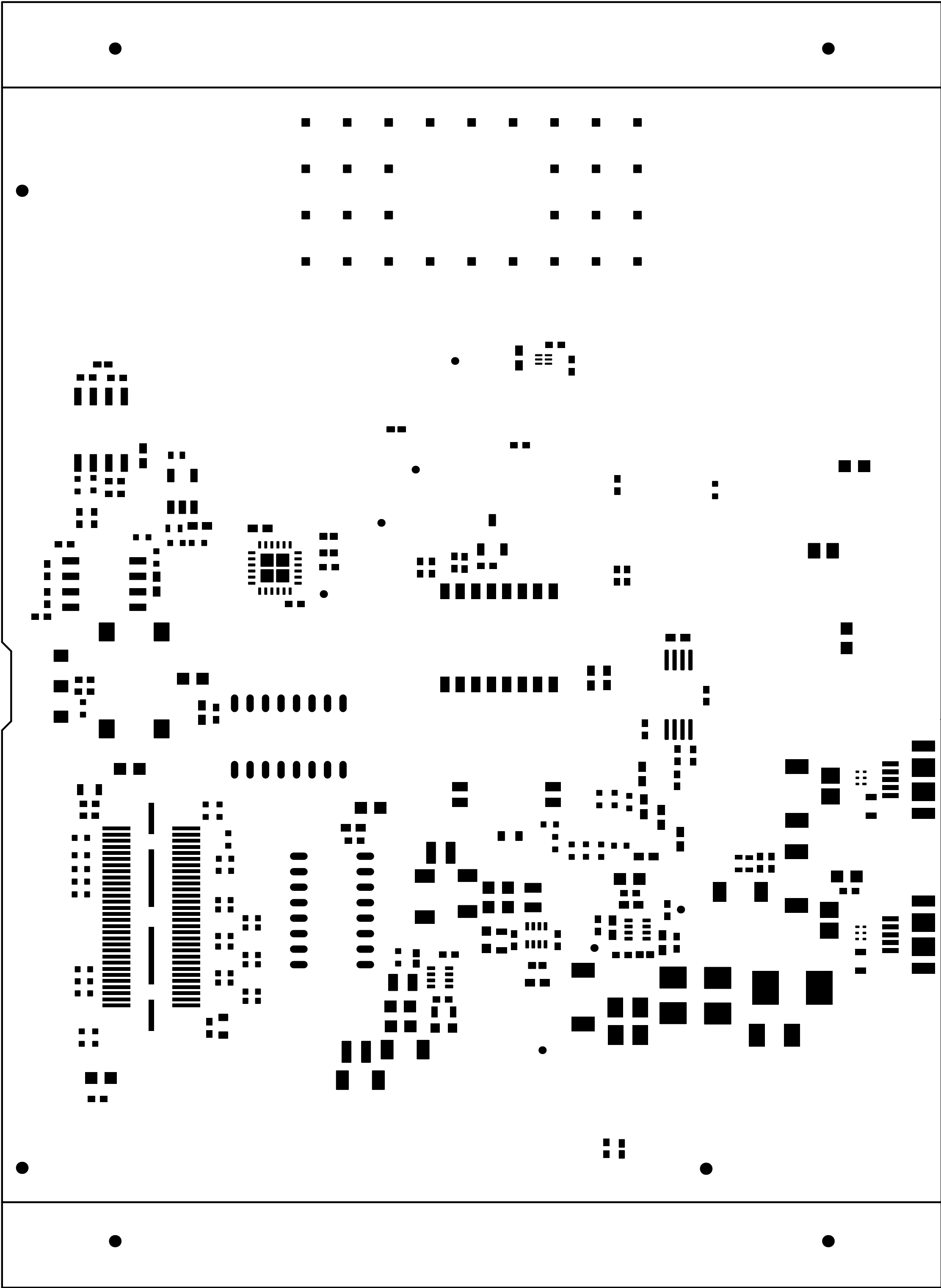
ALL ARTWORK VIEWED FROM TOP SIDE	BOARD #: PROC212	REV: A	SUN REV: Not in version control
LAYER NAME =L3_PWR1	TID #: N/A		
PLOT NAME = Power Plane-1	GENERATED : 15-10-2025 11:19:18		TEXAS INSTRUMENTS



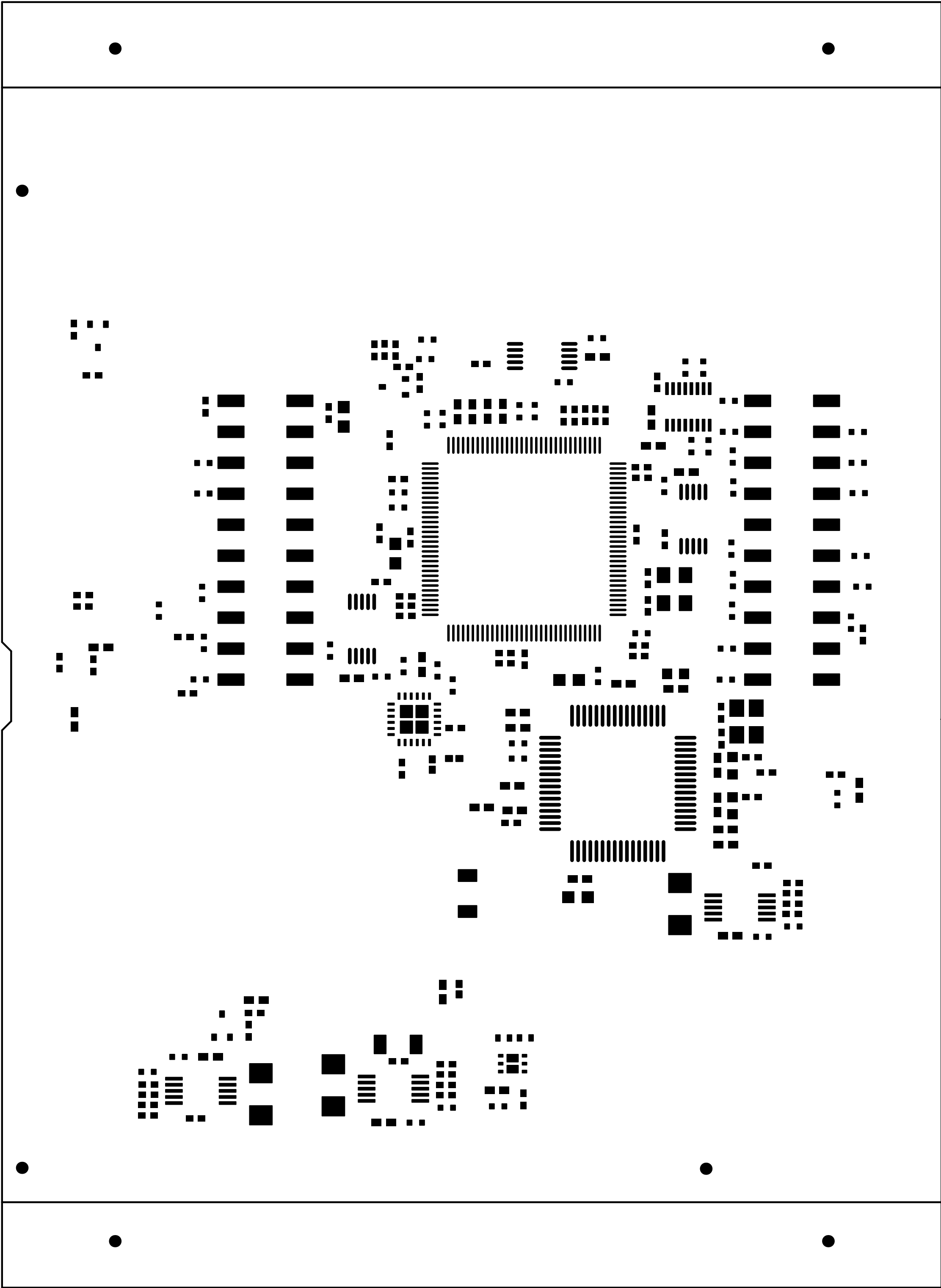
ALL ARTWORK VIEWED FROM TOP SIDE	BOARD #: PROC212	REV: A	SUN REV: Not in version control
LAYER NAME = Bottom Layer	TID #: N/A		
PLOT NAME = Bottom Layer	GENERATED : 15-10-2025 11:19:18		TEXAS INSTRUMENTS



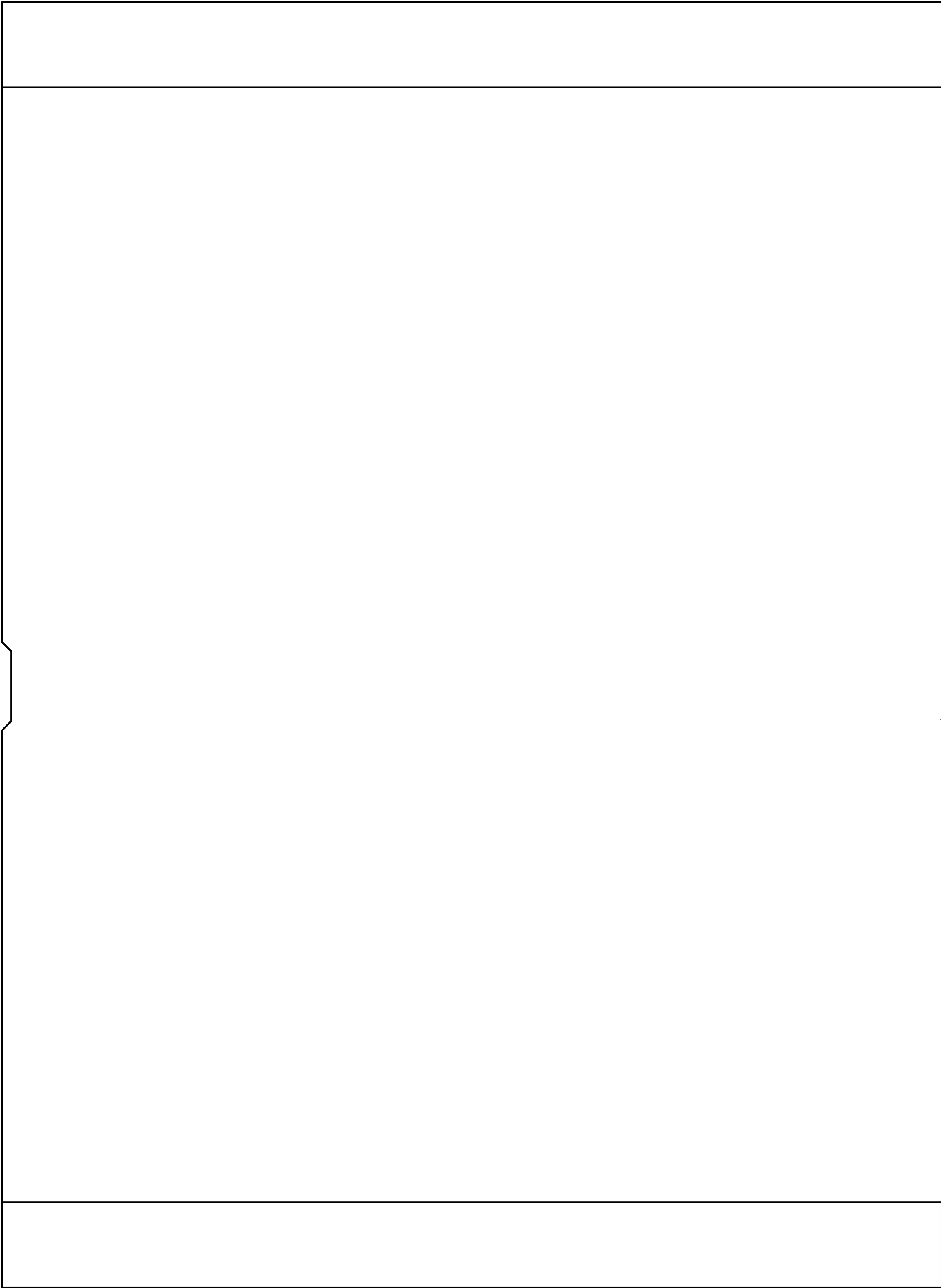
ALL ARTWORK VIEWED FROM TOP SIDE	BOARD #: PROC212	REV: A	SUN REV: Not in version control
LAYER NAME = Bottom Solder	TID #: N/A		
PLOT NAME = Bottom Solder Mask	GENERATED : 15-10-2025 11:19:18		TEXAS INSTRUMENTS



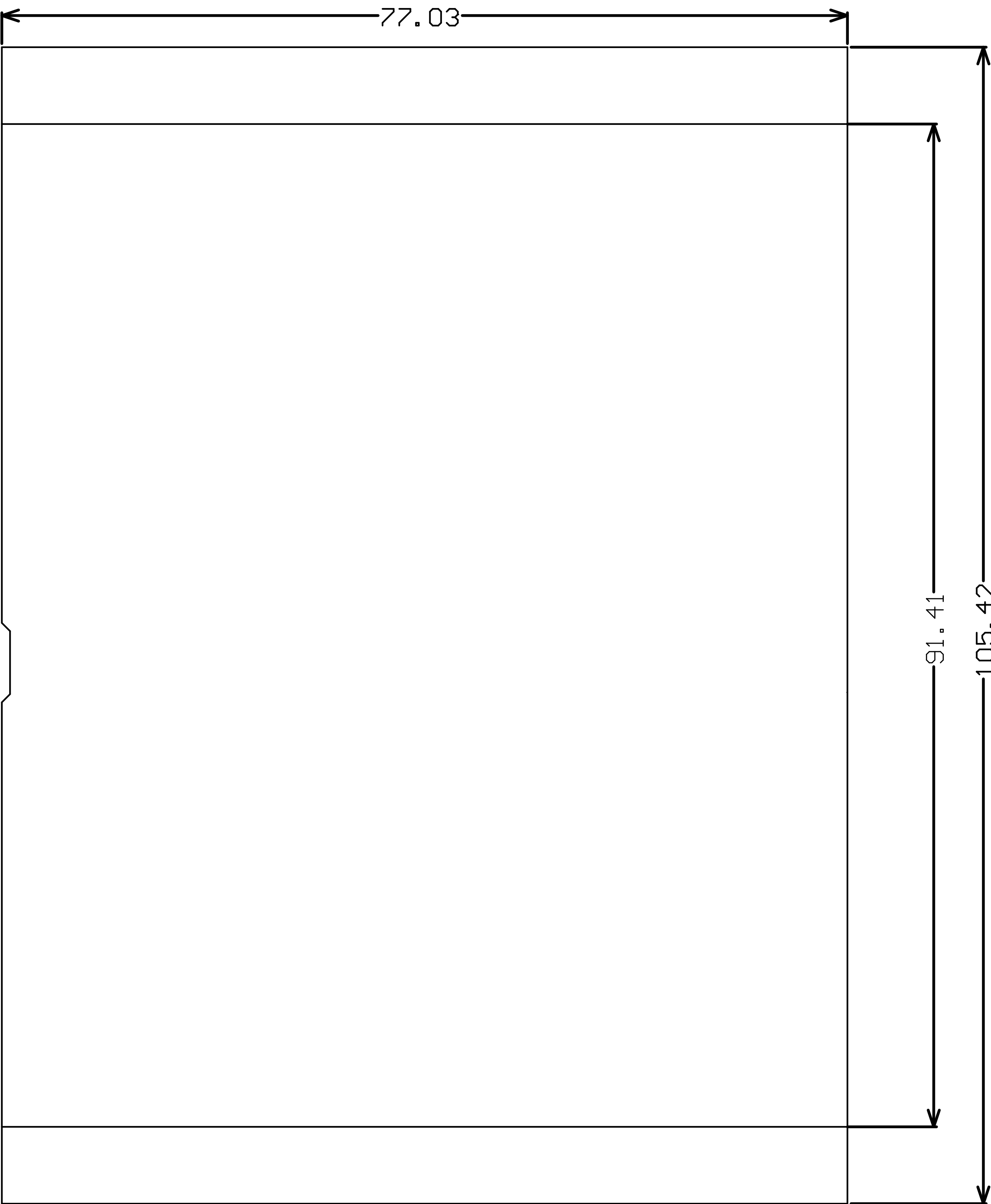
ALL ARTWORK VIEWED FROM TOP SIDE	BOARD #: PROC212	REV: A	SUN REV: Not in version control
LAYER NAME =Top Paste	TID #: N/A		
PLOT NAME = Top Paste	GENERATED : 15-10-2025 11:19:18		TEXAS INSTRUMENTS



ALL ARTWORK VIEWED FROM TOP SIDE	BOARD #: PROC212	REV: A	SUN REV: Not in version control
LAYER NAME =Bottom Paste	TID #: N/A		
PLOT NAME = Bottom Paste	GENERATED : 15-10-2025 11:19:18		TEXAS INSTRUMENTS



ALL ARTWORK VIEWED FROM TOP SIDE	BOARD #: PROC212	REV: A	SUN REV: Not in version control
LAYER NAME = M1 Board Outline	TID #: N/A		
PLOT NAME = Board Outline	GENERATED : 15-10-2025 11:19:19		TEXAS INSTRUMENTS



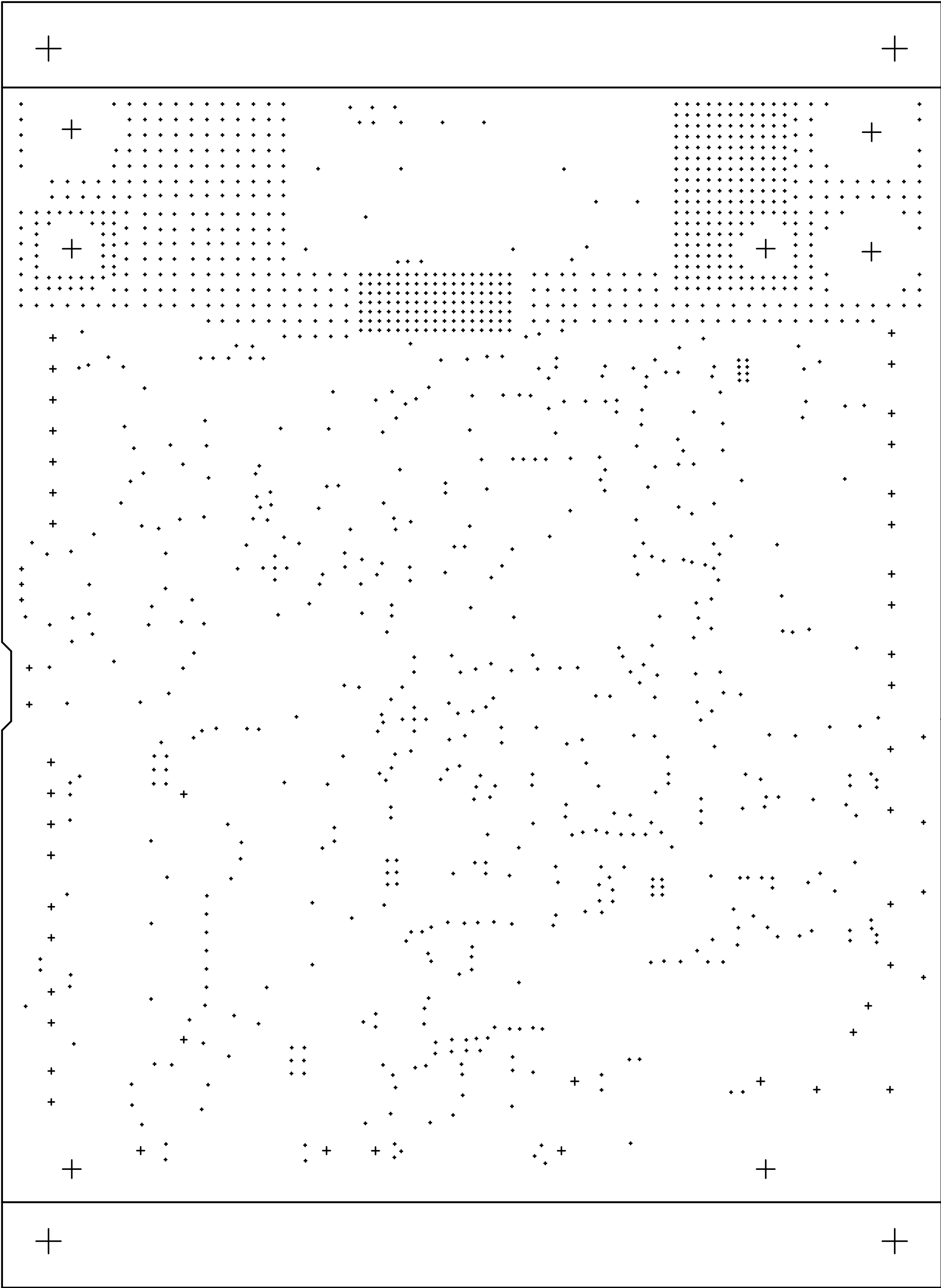
ALL ARTWORK VIEWED FROM TOP SIDE	BOARD #: PROC212	REV: A	SUN REV: Not in version control
LAYER NAME = M1 Board Outline	TID #: N/A		
PLOT NAME = Board Dimensions	GENERATED : 15-10-2025 11:19:19		TEXAS INSTRUMENTS

Symbol	Count	Hole Size	Plated	Hole Length	Hole Tolerance
E	12	7.87mil (0.200mm)	PTH	-	+/-3.00mil
▽	1224	8.00mil (0.203mm)	PTH	-	+/-3.00mil
⊕	3	23.62mil (0.600mm)	PTH	-	+/-3.00mil
▣	4	23.62mil (0.600mm)	PTH	51.18mil (1.300mm)	+/-3.00mil
⊗	2	33.47mil (0.850mm)	NPTH	-	+/-3.00mil
◇	4	33.47mil (0.850mm)	PTH	-	+/-3.00mil
✕	16	39.37mil (1.000mm)	PTH	-	+/-3.00mil
✕	2	39.37mil (1.000mm)	PTH	118.11mil (3.000mm)	+/-3.94mil
⊕	1	39.37mil (1.000mm)	PTH	137.79mil (3.500mm)	+/-3.94mil
A	1	40.00mil (1.016mm)	PTH	-	+/-3.00mil
✱	2	40.16mil (1.020mm)	NPTH	-	+/-2.00mil
B	7	40.16mil (1.020mm)	PTH	-	+/-3.00mil
⊗	4	43.31mil (1.100mm)	PTH	-	+/-3.00mil
☆	6	49.21mil (1.250mm)	PTH	-	+/-3.00mil
◎	3	118.11mil (3.000mm)	NPTH	-	+/-2.00mil
□	4	118.11mil (3.000mm)	PTH	-	+/-3.00mil
▽	4	160.00mil (4.064mm)	NPTH	-	+/-2.00mil
	1299 Total				

Slot definitions : Routed Path Length = Calculated from tool start centre position to tool end centre position.
Hole Length = Routed Path Length + Tool Size = Slot length as defined in the PCB layout



ALL ARTWORK VIEWED FROM TOP SIDE	BOARD #: PROC212	REV: A	SUN REV: Not in version control
LAYER NAME = Drill Drawing M1 Board Outline	TID #: N/A		
PLOT NAME = Drill Drawings	GENERATED : 15-10-2025 11:19:20	TEXAS INSTRUMENTS	



ALL ARTWORK VIEWED FROM TOP SIDE	BOARD #: PROC212	REV: A	SUN REV: Not in version control
LAYER NAME = Drill Guide M1 Board Outline	TID #: N/A		
PLOT NAME = Drill Guide	GENERATED : 15-10-2025 11:19:20		TEXAS INSTRUMENTS